

BN30



BN 30 STANDARD BALLNOSE CUTTERS

≤ 900 N/mm² + B0819 ≤ 35 HRC

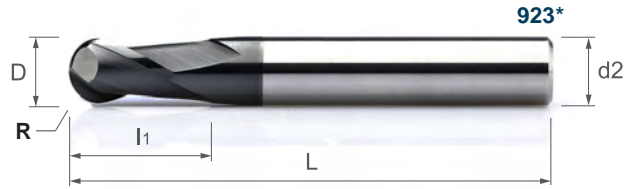
Solid Carbide BN 30 Standard Ballnose Cutters, 2 flutes

Fraises BN 30 Standard en carbure monobloc, à bout hémisphérique, 2 dents

整体硬质合金 BN 30 系列 球头 立铣刀 2 刃 - 标准长度

VHM Standard BN 30 Radiuschafffräser, 2 Zähne

Frese cilindrica a raggio in metallo duro integrale, tipo BN 30 Standard, 2 taglianti



| | | | | | |
|--|--|--|--|--|--|
| | | | | | |
|--|--|--|--|--|--|

| EDPNo./EDV-Nr./ CODEusine/CodiceEDP = *+Ødata | Dimension (mm) | | | | | | 574* | 923* |
|---|------------------|-----|----|----|-----|---------|--------|-------|
| | D | R | I1 | I2 | L | d2 (h6) | T... n | B0819 |
| 0300 | 3 | 1.5 | 9 | | 40 | 3 | ● | ● |
| 0300 050 06 | 3 | 1.5 | 9 | | 50 | 6 | ● | ● |
| 0400 | 4 | 2 | 14 | | 50 | 4 | ● | ● |
| 0400 050 06 | 4 | 2 | 14 | | 50 | 6 | ● | ● |
| 0500 | 5 | 2.5 | 15 | | 50 | 5 | ● | ● |
| 0500 050 06 | 5 | 2.5 | 15 | | 50 | 6 | ● | ● |
| 0600 050 | 6 | 3 | 20 | | 50 | 6 | ● | ● |
| 0600 060 | 6 | 3 | 20 | | 60 | 6 | ● | ● |
| 0800 | 8 | 4 | 20 | | 64 | 8 | ● | ● |
| 1000 70 | 10 | 5 | 22 | | 70 | 10 | ● | ● |
| 1000 75 | 10 | 5 | 22 | | 75 | 10 | ● | ● |
| 1200 | 12 | 6 | 25 | | 75 | 12 | ● | ● |
| 1400 | 14 | 7 | 30 | | 90 | 14 | ○ | ○ |
| 1600 | 16 | 8 | 30 | | 90 | 16 | ● | ● |
| 1800 | 18 | 9 | 38 | | 100 | 18 | ○ | ○ |
| 2000 | 20 | 10 | 38 | | 100 | 20 | ● | ● |

Material group - Material-Gruppe - Groupe matière - Gruppo materiali - 材质主类

| | | | | | | | | | | | | | | | | | | | | | | | | | |
|-----|-----|-----|-----|-----|-----|-----|-----|-----|-----|-----|-----|-----|-----|-----|-----|-----|-----|-----|-----|-----|-----|-----|-----|-----|-----|
| M02 | M03 | M04 | M05 | M06 | M07 | M08 | M09 | M10 | M11 | M12 | M13 | M14 | M15 | M18 | M22 | M25 | M31 | M16 | M20 | M17 | M19 | M21 | M23 | M24 | M32 |
| M26 | M27 | M28 | M33 | M01 | M29 | M30 | | | | | | | | | | | | | | | | | | | |

Working Material | Cutting Parameter

576

299

BN 30 BALLNOSE CUTTERS - LONG

≤ 900 N/mm² + B0819 ≤ 35 HRC

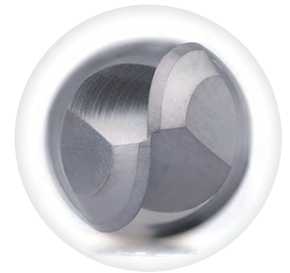
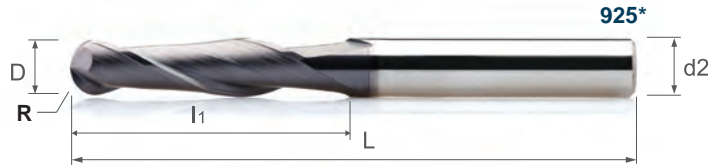
Solid Carbide BN 30 Long Ballnose Cutters, 2 flutes

Fraises BN 30 longues en carbure monobloc, à bout hémisphérique, 2 dents

整体硬质合金 BN 30 系列 球头 立铣刀 2 刃 - 中长

VHM lange BN 30 Radiusschaftfräser, 2 Zähne

Frese cilindriche a raggio in metallo duro integrale, tipo BN 30 lunghe, 2 taglienti



| EDPNo./EDV-Nr./ CODEusine/CodiceEDP = *+Ødata | Dimension (mm) | | | | | | 577* | 925* |
|---|------------------|-----|----|----|-----|---------|--------|-------|
| | D | R | I1 | I2 | L | d2 (h6) | T... n | B0819 |
| 0300 | 3 | 1.5 | 19 | | 60 | 3 | ● | ● |
| 0300 075 06 | 3 | 1.5 | 19 | | 75 | 6 | ● | ● |
| 0400 | 4 | 2 | 19 | | 60 | 4 | ● | ● |
| 0400 075 06 | 4 | 2 | 19 | | 75 | 6 | ● | ● |
| 0500 | 5 | 2.5 | 19 | | 60 | 5 | ● | ● |
| 0500 075 06 | 5 | 2.5 | 19 | | 75 | 6 | ● | ● |
| 0600 | 6 | 3 | 31 | | 75 | 6 | ● | ● |
| 0800 | 8 | 4 | 31 | | 75 | 8 | ● | ● |
| 1000 075 | 10 | 5 | 31 | | 75 | 10 | ● | ● |
| 1000 100 | 10 | 5 | 31 | | 100 | 10 | ● | ● |
| 1200 | 12 | 6 | 50 | | 100 | 12 | ● | ● |
| 1400 | 14 | 7 | 57 | | 125 | 14 | ○ | ○ |
| 1600 | 16 | 8 | 57 | | 125 | 16 | ● | ● |
| 1800 | 18 | 9 | 57 | | 125 | 18 | ○ | ○ |
| 2000 | 20 | 10 | 57 | | 125 | 20 | ● | ● |

Material group - Material-Gruppe - Groupe matière - Gruppo materiali - 材质主类

| | | | | | | | | | | | | | | | | | | | | | | | | | |
|-----|-----|-----|-----|-----|-----|-----|-----|-----|-----|-----|-----|-----|-----|-----|-----|-----|-----|-----|-----|-----|-----|-----|-----|-----|-----|
| M02 | M03 | M04 | M05 | M06 | M07 | M08 | M09 | M10 | M11 | M12 | M13 | M14 | M15 | M18 | M22 | M25 | M31 | M16 | M20 | M17 | M19 | M21 | M23 | M24 | M32 |
| M26 | M27 | M28 | M33 | M01 | M29 | M30 | | | | | | | | | | | | | | | | | | | |

Working Material | Cutting Parameter

576

300



BN 30 BALLNOSE CUTTERS - EXTRA-LONG

≤ 900 N/mm² + B0819 ≤ 35 HRC

UK Solid Carbide BN 30 Extra-Long Ballnose Cutters, 2 flutes

FR Fraises BN 30 extra-longues en carbure monobloc, à bout hémisphérique, 2 dents

CN 整体硬质合金 BN 30 系列 球头 立铣刀 2 刃 - 加长

DE VHM extra-lange BN 30 Radiuschaftfräser, 2 Zähne

IT Frese cilindriche a raggio in metallo duro integrale, tipo BN 30 extra-lunghe, 2 taglienti



| EDPNo./EDV-Nr./ CODEusine/CodiceEDP =*+Ødata | Dimension (mm) | | | | | | 580* | 927* |
|--|------------------|-----|----|----|-----|---------|--------|-------|
| | D | R | I1 | I2 | L | d2 (h6) | T... n | B0819 |
| 0300 | 3 | 1.5 | 25 | | 100 | 3 | ● | ● |
| 0300 100 06 | 3 | 1.5 | 25 | | 100 | 6 | ● | ● |
| 0400 | 4 | 2 | 31 | | 100 | 4 | ● | ● |
| 0400 100 06 | 4 | 2 | 31 | | 100 | 6 | ● | ● |
| 0500 | 5 | 2.5 | 31 | | 100 | 5 | ● | ● |
| 0500 100 06 | 5 | 2.5 | 31 | | 100 | 6 | ● | ● |
| 0600 100 | 6 | 3 | 38 | | 100 | 6 | ● | ● |
| 0600 150 | 6 | 3 | 38 | | 150 | 6 | ● | ● |
| 0800 100 | 8 | 4 | 41 | | 100 | 8 | ● | ● |
| 0800 150 | 8 | 4 | 41 | | 150 | 8 | ● | ● |
| 1000 125 | 10 | 5 | 45 | | 125 | 10 | ● | ● |
| 1000 150 | 10 | 5 | 45 | | 150 | 10 | ● | ● |
| 1200 125 | 12 | 6 | 75 | | 125 | 12 | ● | ● |
| 1200 150 | 12 | 6 | 75 | | 150 | 12 | ● | ● |
| 1400 150 | 14 | 7 | 75 | | 150 | 14 | ○ | ○ |
| 1400 200 | 14 | 7 | 75 | | 200 | 14 | ○ | ○ |
| 1600 150 | 16 | 8 | 75 | | 150 | 16 | ● | ● |
| 1600 200 | 16 | 8 | 75 | | 200 | 16 | ● | ● |
| 1800 150 | 18 | 9 | 75 | | 150 | 18 | ○ | ○ |
| 1800 200 | 18 | 9 | 75 | | 200 | 18 | ○ | ○ |
| 2000 150 | 20 | 10 | 75 | | 150 | 20 | ● | ● |
| 2000 200 | 20 | 10 | 75 | | 200 | 20 | ● | ● |

Material group - Material-Gruppe - Groupe matière - Gruppo materiali - 材质主类

| | | | | | | | | | | | | | | | | | | | | | | | | | |
|-----|-----|-----|-----|-----|-----|-----|-----|-----|-----|-----|-----|-----|-----|-----|-----|-----|-----|-----|-----|-----|-----|-----|-----|-----|-----|
| M02 | M03 | M04 | M05 | M06 | M07 | M08 | M09 | M10 | M11 | M12 | M13 | M14 | M15 | M18 | M22 | M25 | M31 | M16 | M20 | M17 | M19 | M21 | M23 | M24 | M32 |
| M26 | M27 | M28 | M33 | M01 | M29 | M30 | | | | | | | | | | | | | | | | | | | |

Working Material Cutting Parameter

576

301

MODIFICHE TECNICHE POSSIBILI SENZA PREAVVISO